

Scenic Hwy - Spanish Town Rd Area Rehabilitation Project (Phase 2)

City-Parish #13-AR-MS-0032

Project Start: **4th Quarter 2013**
 Advertise for Bids: **4th Quarter 2014**
 Anticipated Project End: **2nd Quarter 2016**

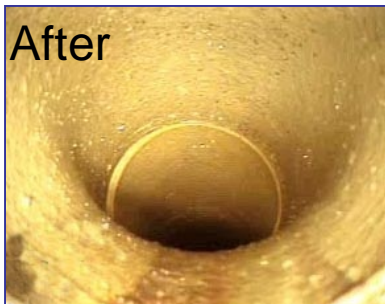
Rehabilitation of the sewer collection system is a comprehensive physical process that begins with cleaning and inspection of sewer pipes and manholes. Typical rehabilitation repairs include pipe and manhole replacement and trenchless technologies that minimize above ground disturbances, such as cured-in-place pipe liners.



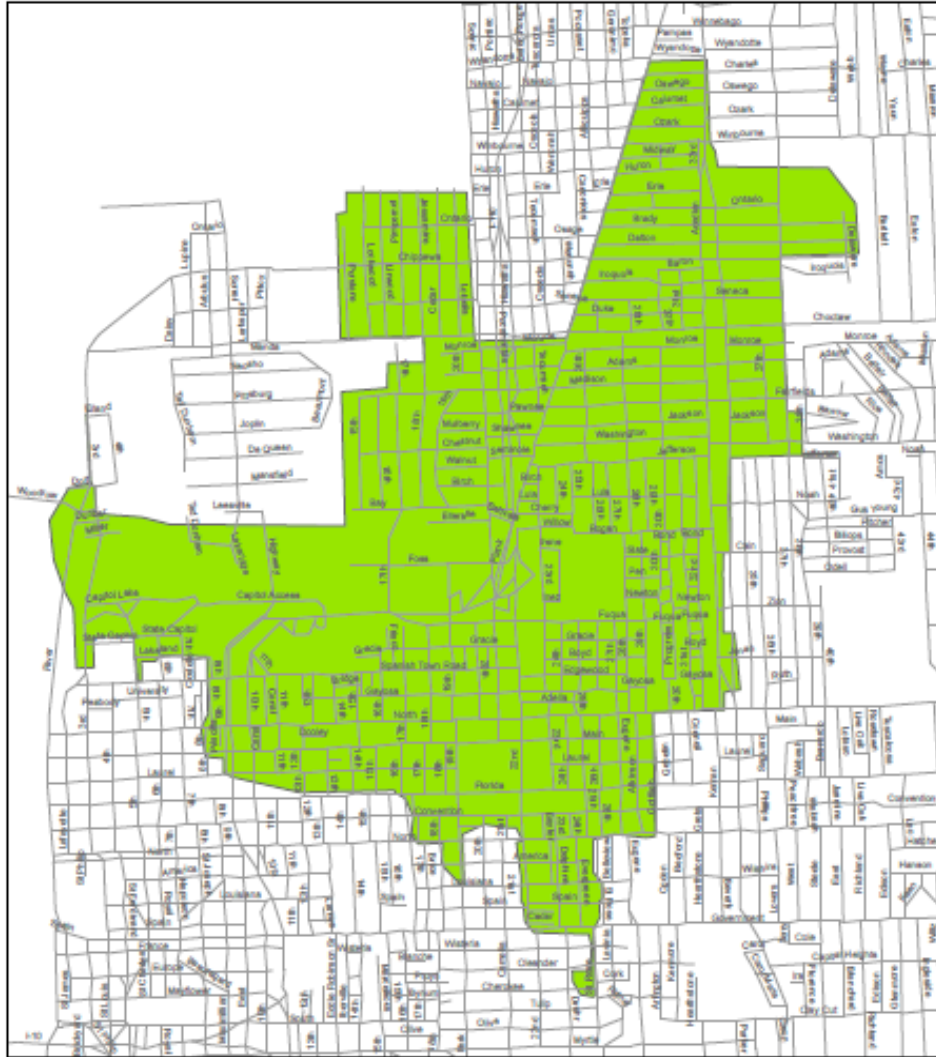
One of the first steps in rehabilitation includes a physical inspection of manholes and pipes to identify blockages.



Simply cleaning the pipes and manholes in preparation for the physical inspection removes blockages, debris and roots.



After



Scenic Hwy - Spanish Town Rd Area Rehabilitation Project (Phase 2) Facts

For this project:

- Approximately 355,498 linear feet of pipeline to be inspected and rehabilitated
- Approximately 1,348 manholes to be rehabilitated or replaced

Design Consultant:

Rehab Prog Mgmt Team

Construction Contractor:

Grady Crawford Construction Company

Estimated Construction Cost: \$8.8 M